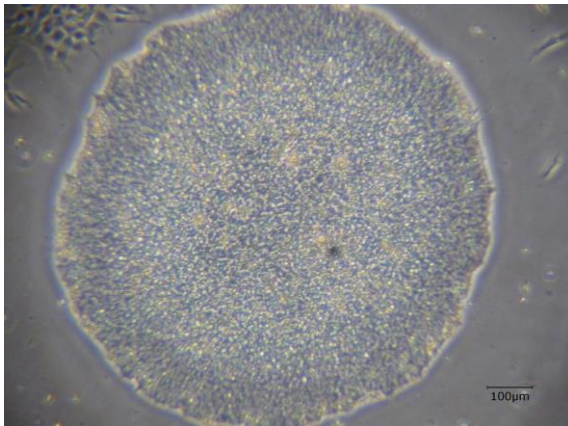
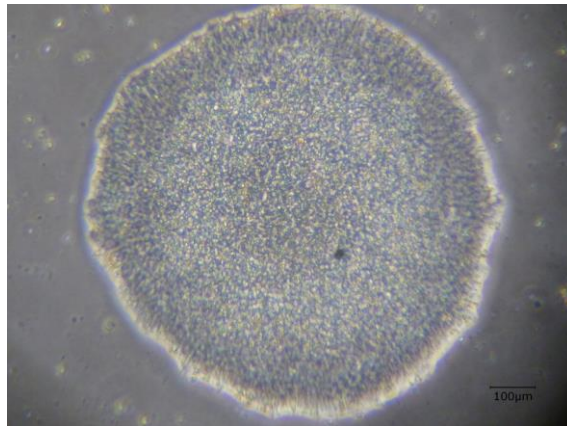


【 CiRA-j-1325 】 Morphology of iPSC colonies

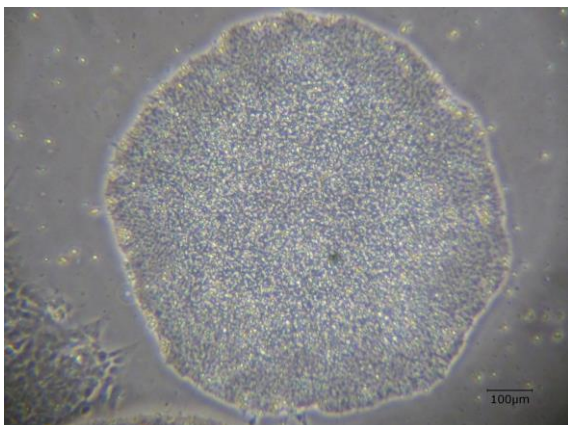
CiRA-j-1325-A: passage-3



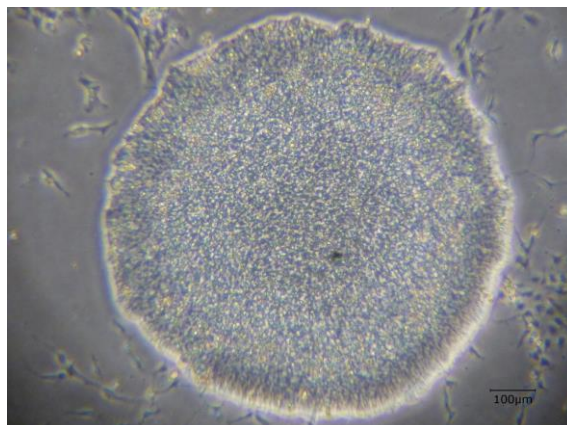
CiRA-j-1325-B: passage-3



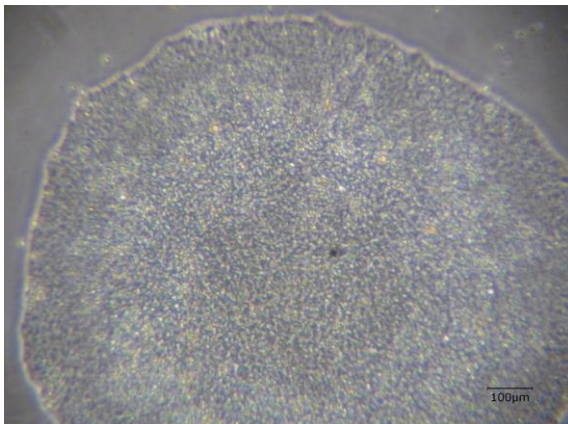
CiRA-j-1325-C: passage-3



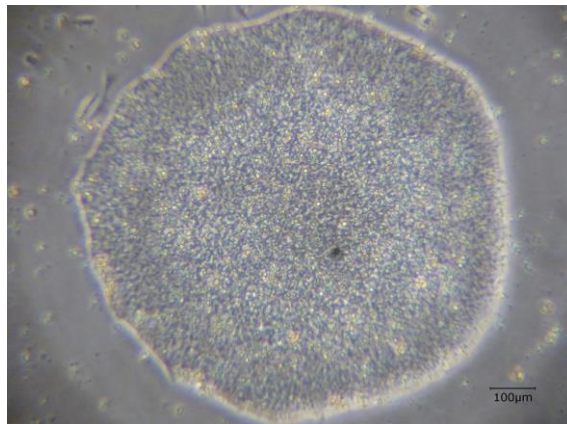
CiRA-j-1325-D: passage-3



CiRA-j-1325-E: passage-3



CiRA-j-1325-F: passage-3



(All images were captured at 4x magnification)